



September
2016

BMAL Fall Shows

Huntingdon ValleyBank

610 Easton Rd., Warrington

Tear down: Mon., Oct. 3 at 9 a.m.

Upper Moreland Library

109 Park Ave., Willow Grove

Set up: Mon., Oct. 3 at 10 a.m.

Tear down: Tue., Nov. 1 at 10 a.m.

*Limit of only 1 Large Painting
and 2 Medium to Small sizes.
All paintings must be wired.*

The President's Corner



Hello Everyone!

How wonderful to see all of you, as we start our new year! Our plans for the year are really, really exciting, with great speakers, fellowship, and the two Members' Shows.

Your board has been busy all summer setting up our programs. Many thanks to all these people. Remember that they can always use help and may ask you to join the fun times! Don't be shy!

We are asking all of you to spread the word about BMAL....We are focusing on membership. I bet we can fill this room!! Our next meeting is the October Members' Show....make sure you have current BMAL membership.

Dawn

We Appreciate and Thank:

Peg McGuckin who is the new chairperson for "Trips."
Ray Kuznicki for volunteering to assist with "Room Set-up."
George Fieo, Val Miller and Susan Roberts for making our bank and library shows possible.

October is the Members' Show

- All members may enter 1 painting and/or 1 photograph.
- Two Painting categories - **Advanced** and **Intermediate**.
- Registration fee of \$2.00 for **each** entry.
- All participants must be **BMAL members**.
- All work is to be **original** - not copied from another's art.
- Registration begins at **6:00** and closes at **6:30**.
- Members should provide an easel for large works.

All members, please bring finger food or desserts to share during our social time before the critique and judging.

Tonight's Speaker: Sharon Shaw

Sharon Shaw lives in scenic Bucks County from which she draws inspiration for her landscapes. She also paints portraits and landscapes of her travels. She varies her art with portraits and Religious Icons using Silverpoint and Egg Tempera done in the Historical, Russian, Byzantine, and Renaissance style. Sharon teaches art classes in her Bucks County Studio. She is currently splitting her time between Egg Tempera works and studio oil paintings. Her paintings are in many private and public collections.

The following is a list of the many BMAL expenses which are funded by our membership dues.

Liability insurance
 Fees to maintain website
 Meeting room rental
 Speaker fees
 Judges fee for the Members' shows
 Prize money and ribbons for the Members' shows
 Refreshments
 Scholarship fund
 Printing of brochures, newsletters and flyers

Please join and support this wonderful organization.

COME OUT AND SUPPORT OUR MEMBERS

Marie Ashton, Rosemary Kozak, Ginny Mamrol, Susan Margraff, Irene Mueller, Carol Walker, Al Wiesner and Lois Wursta are participating in a show at the

Bucks County Visitors' Center • 3207 Street Rd., Bensalem

Sept. 25-Nov. 4 Reception: Sun., Oct. 23 • 12-3 p.m.

Irene Mueller is selling her original handmade jewelry at the Pine Run Village Fall Festival • 777 Ferry Rd., Doylestown

Sat., Oct. 1 • 10 a.m.-3 p.m.

Susan Roberts is the Artist of the Month at the

Northampton Library • 25 Upper Holland Rd., Richboro

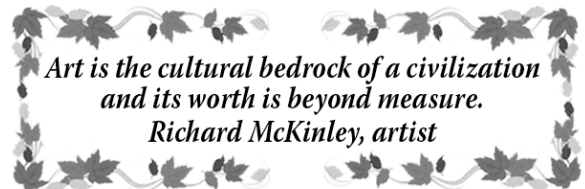
Until the end of September

Take a Trip

McConkey's Market - 40 vendors selling original art and photography, pottery and jewelry. Free event.

Washington Crossing Historic Park

Sat., Oct. 8 • 10 a.m.-4 p.m.



Please continue to email photos of your work to Lynne Whitsel for display on our website.

Phone: 215 355-5730 or Email: lynnedw@verizon.net

We Welcome Our Newest Members:

George Lowenstein, Margot Winfree and Geri Massott

www.bucksmontartleague.com